

From Head Trauma Presentation 4 Feb 2019

Courtesy of





What is a head injury ?

- Concussion
- Skull Fracture
- Open or Closed



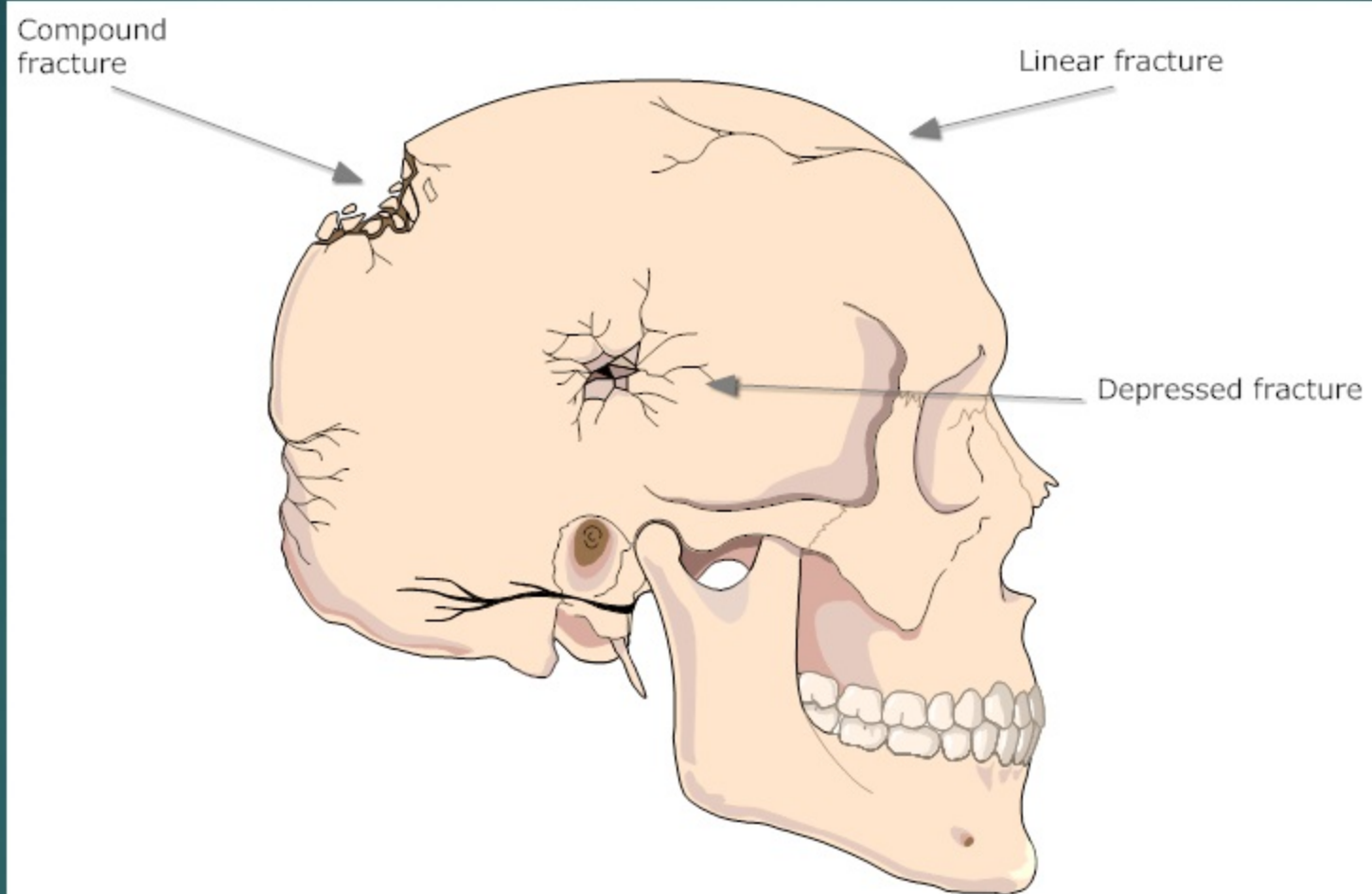
Concussion

- An injury to the head that may cause instant loss of awareness/alertness
- Can last from a few minutes to several hours

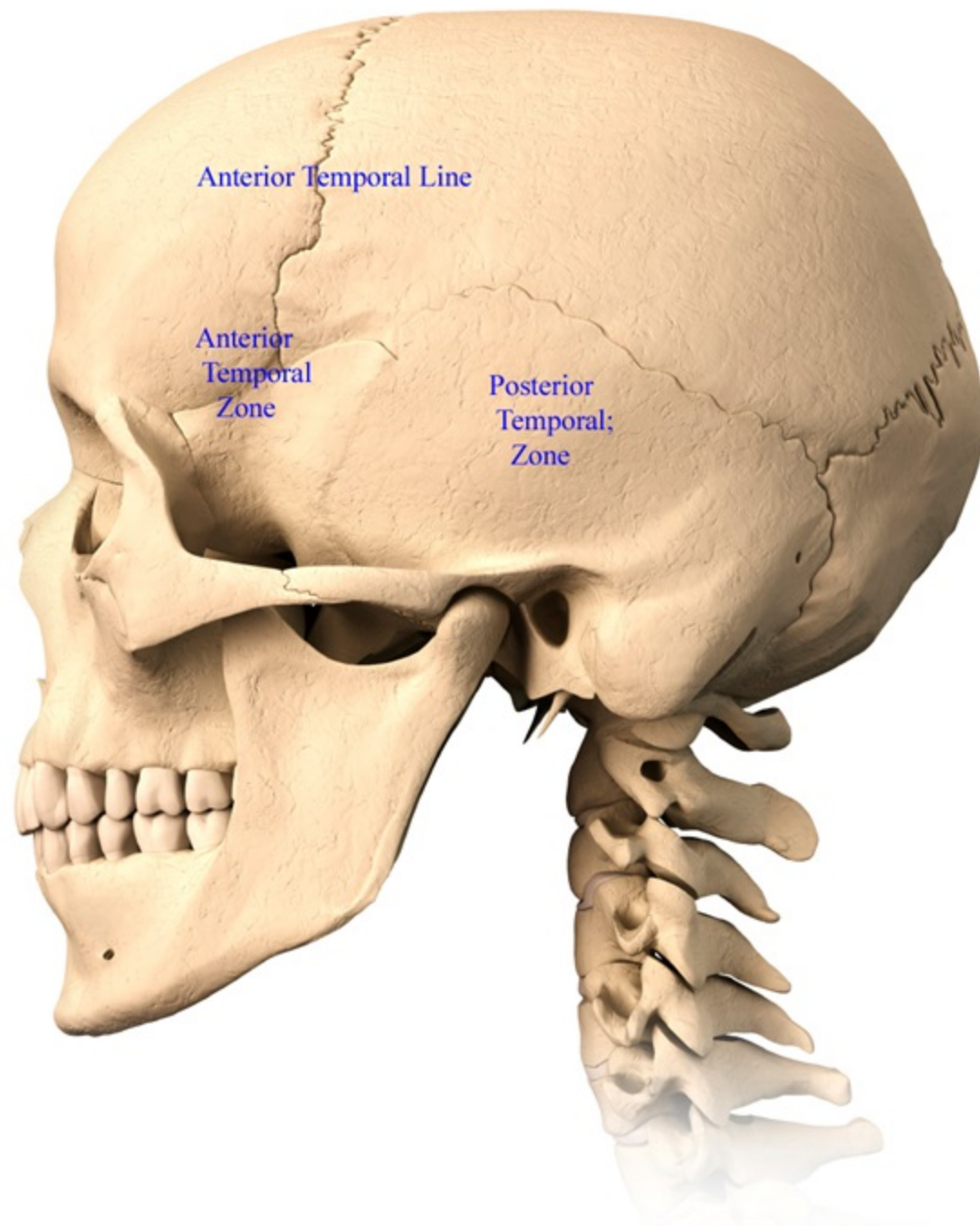
Skull Fractures

- Linear – Usually observed for a brief amount of time
- Depressed – May or may not have a cut to the scalp. Can require surgery
- Basilar – Very serious, bruising around the eyes and behind the ear. Can have clear fluid coming from the ear or nose.



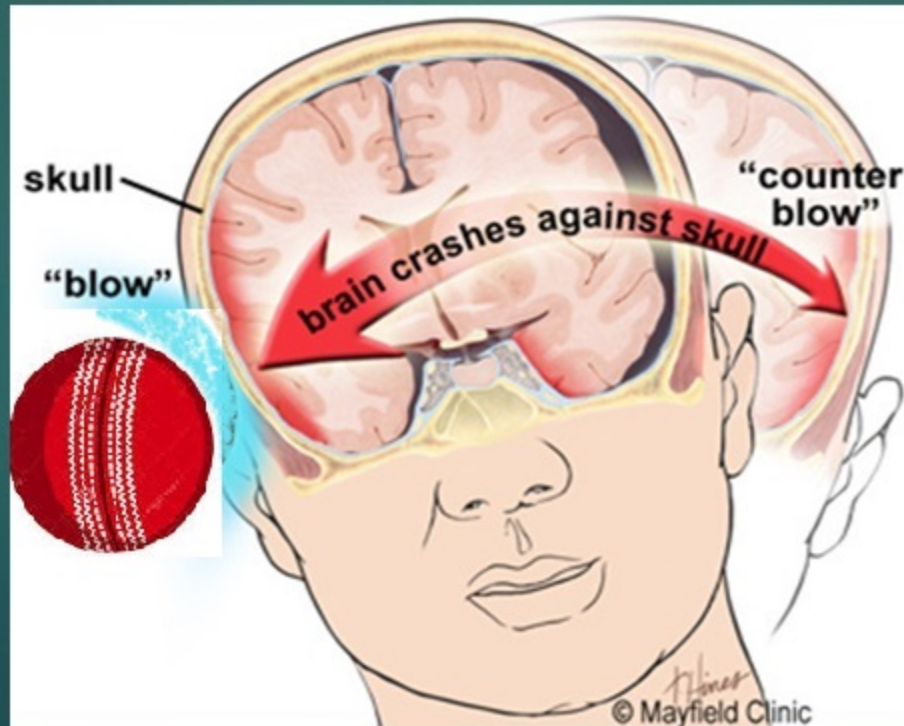


Copyright medicshandbook.com ©



How are they caused?

- Sudden impact
- Acceleration - Deceleration
- Coup contra coup (Bouncing of the brain)



Signs and symptoms

Mild TBI

Physical symptoms

- ▶ LOC - seconds to minutes
- ▶ Dazed, confused, disoriented
- ▶ Headache
- ▶ Nausea/vomiting
- ▶ Drowsy
- ▶ Speech problems
- ▶ Dizzy

Sensory & Cognitive symptoms

- ▶ Blurred vision
- ▶ Ringing in the ears
- ▶ Light or sound sensitivity
- ▶ Memory loss
- ▶ Problems concentrating

Signs and symptoms

Moderate to severe TBI

Physical symptoms

- ▶ LOC – Minutes to Hours
- ▶ Persistent or worsening Headache
- ▶ Repeated Nausea/vomiting
- ▶ Convulsions or seizures
- ▶ Dilation of one or both pupils

Sensory & Cognitive symptoms

- ▶ Profound confusion
- ▶ Agitation
- ▶ Combativeness
- ▶ Slurred speech



Visual

- ▶ Do they have an unsteady gait
- ▶ Are there any cuts, bruising or deformities
- ▶ Are they focused
- ▶ Can they follow an object

Verbal

- ▶ Is their speech normal
- ▶ Do they comprehend
- ▶ Do they have ringing in their ears
- ▶ Is their hearing equal
- ▶ Can they recall what happened

Motor skills

- ▶ Do they have an unsteady gait
- ▶ Do they have equal bilateral strength
- ▶ Can they touch their finger to their nose bilaterally

What do we do?



Get them comfortable/laying down

Reassure them

Call 000

Monitor for deterioration

Prepare for vomit

What do we do?



THANK YOU

